
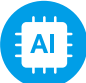






Pan/Tilt AI Home Security Wi-Fi Camera

Model: Tapo C225

Secure. Smart. Easy.

-  Physical Privacy Mode
-  Smart AI Detection and Notification
-  Smart Motion Tracking
-  Starlight Sensor



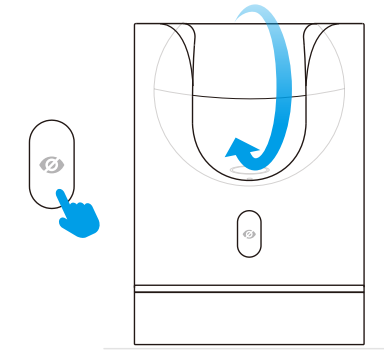
// Highlight

Physical Privacy Mode

Maintain privacy with the lens blocked by the housing when physical privacy mode is enabled.

Smart AI Detection and Notification

Smart AI identifies people, pets, and vehicles while also recognizing abnormal sounds, notifying users as needed.



// Features



850nm or 940nm Night Vision
Switch to the 940nm IR LED to watch over your baby without interrupting their sleep



Smart Motion Tracking
Tracks and follows a subject, keeping it within the camera's field of view



Field of View
360° horizontal range



Privacy Zone
Block customizable zones from being recorded



Activity Zone
Notifies you when activity is detected in specific zones



Cross-Line Detection
Notifies you when passing set boundaries



Sound and Light Alarm
Trigger sounds and light as an alarm when motion is detected



Two-Way Audio
Enables communication through a built-in microphone and speaker



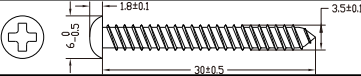
Easy Setup
Follow the in-app instructions to easily set up in minutes

// Specifications

| | | |
|--------------------------|--------------------|--|
| Camera | Image Sensor | 1/3" Progressive Scan CMOS Starlight Sensor |
| | Lens | Focal Length: 4.3mm Aperture: F1.6 Field of View: 95° (Diagonal), 81°(Horizontal), 40°(Vertical) |
| | Night Vision | 1 × 850 nm IR LED (30 ft / 10 m) 2 × 940 nm IR LED (30 ft / 10 m) |
| | Day/Night Switch | IR-Cut Filter with Auto-Switching |
| | Lighting | / |
| | Interface & Button | 1× RESET Button 1× Privacy Button 1× microSD Card Slot (Up to 512 GB) |
| | Hub Compatibility | / |
| Video & Audio | Maximum Resolution | 2K QHD 4MP (2560 × 1440 px) |
| | Frame Rate | 15/20/25/30 fps (Default 15fps) |
| | Digital Zoom | None |
| | Video Compression | H.264 |
| | Live View | Yes |
| | Image Enhancement | 3DNR WDR |

| | | |
|-------------------------------------|-----------------------|---|
| Video & Audio | Audio Input & Output | Built-in Microphone and Speaker |
| | Audio Communication | Two-Way Audio with Noise Cancellation |
| | Siren Volume | 93dB (Level measured at 4-inch/10-cm distance) |
| Storage | Local Storage | microSD Card Slot on Camera (Up to 512 GB) |
| | Cloud Storage | Tapo Care Cloud Storage Services (Subscription required) |
| Detection & Notification | Sensor | / |
| | AI Detection | <ul style="list-style-type: none"> Motion Detection Person Detection Pet Detection Vehicle Detection Line-Crossing Detection Camera Tampering Baby Crying Detection Cat Meows Detection Dog Barks Detection Glass Break Detection |
| | Activity Zones | Yes *Only works with Motion Detection. |
| | Output Notification | System Notification System Notification with Snapshot (Tapo Care Services) |
| Network | Network Connectivity | Connect via Wi-Fi |
| | Wireless Connectivity | IEEE 802.11b/g/n, 2.4 GHz Wi-Fi |

| | | |
|-----------------|---|--|
| Network | Transmission Rate | 11b: 11 Mbps 11g: 54 Mbps 11n: 72.2 Mbps |
| | Protocol | TCP/IP, DHCP, ICMP, DNS, NTP, HTTPS, TCP, UDP |
| | Max. Distance Between Hub and Camera/Doorbell | / |
| | Ethernet Port | / |
| | RTSP | Yes |
| | ONVIF | Yes |
| Security | Security | On-Device Machine Learning 128-bit AES Encryption with SSL/TLS WPA/WPA2-PSK/WPA3 |
| Power | Power Source | 12V DC Power Adapter |
| | Input Voltage | 100-240 V, 50/60 Hz |
| | Output Voltage | 12 V, 1.0 A (DC Power) |
| | DC Power Connector Size | Inside Ø: 2.1 mm Outside Ø: 5.5 mm |
| | Power Cord Length | 3 m |
| | Typical Power Consumption | 5 W |
| | Maximum Power Consumption | 8 W |

| | | |
|----------------|-----------------------|--|
| General | Certifications | CE, FCC, NCC, BSMI, IC, VCCI, JRF, KC, RCM, WEEE, EAC, RoHS |
| | Smart Integration | Google Assistant, Amazon Alexa |
| | Weather Resistance | \ |
| | System Requirements | Tapo App: iOS 9.0 or higher, Andriod 4.4 or higher |
| | Mounting Options | Tabletop Ceiling-Mounted |
| | Operating Temperature | 0 °C ~ 40 °C (32 °F ~ 104 °F) |
| | Storage Temperature | -20 °C ~70 °C (-4 °F ~ 158 °F) |
| | Operating Humidity | 10%~90% RH, Non-condensing |
| | Storage Humidity | 5%~90% RH, Non-condensing |
| | Charging Temperature | \ |
| | Mounting Screw Size |  |
| | Dimensions | 3.15 × 3.15 × 4.41 in (80 × 80 × 112 mm) |
| | Weight | 11.01 oz / 312.12 g |
| | Package Contents | Tapo C225 Camera DC Power Adapter Quick Start Guide Mounting Screws Mounting Template Camera Base |